

Belt scale - Module EK

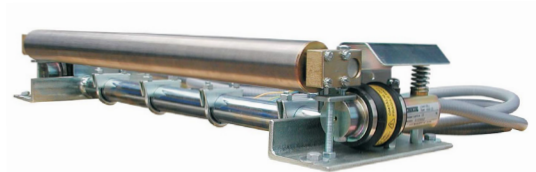
EK - For flat and light material

Belt weighing unit model EK is used in belt conveyors with a capacity range of approximately 0,5-30 t/h.

The belt weighing unit is designed for mounting on the conveyor frame.

Belt weighing module EK include:

- Trimming screws for the rollers, allowing for easy and accurate adjustment.
- Light roller with ball bearings.
- Two load cells for conversion of the load to an electrical signal.
- Overload protection for the load cells.
- Splash guard for each load cell.



Specifications

Rated load for load cells: 2 x 15 kg

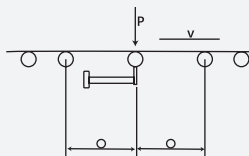
Material weight 'P': 3-20 kg

Maximum belt weight: 10 kg

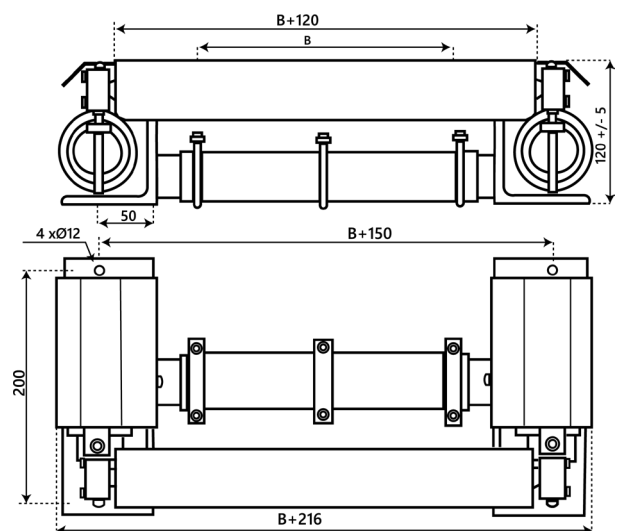
P is calculated using formula:

$$P = (Q \cdot a) / (3600 \cdot v)$$

Q= conveyor capacity in kg/h
 a= idler pitch in weighing section in m
 v= belt speed in m/s



Dimensions



Designation and belt widths in mm.

EK-B400	EK-B700
EK-B500	EK-B800
EK-B600	EK-B900
EK-B650	EK-B1000