

Load cell C, DC 1, 25t - 20t

For tension loads

Load cells C, CD are intended for tension loads. They are primarily used to weigh containers and other objects suspended by load cells.

Type C - Load cells are designed for rated loads for **1,25 t to 20 t**. Lifting eyes are available according to SMS 1577 Standard.

The load cells are the load sensors of any weighing system.

They are installed as support points for the object to be weighed. They convert force or weight into an electrical signal by way of strain gauges.



- All S-E-G load cells are:**
- Made in Sweden
 - High Quality and have a long life span
 - With a 5 year warranty

Designations

Load cells are identified by a 3-unit code:



Code example:

CN4-20, A load cell type C, class 0,2 with terminal resistance of 430 ohms and a rated load of 20 tons.

Class (Max error as a % of load rating, calibration tolerance not included.)		0,2	
	Type	C	CD
	Class	N	N
	Resistance	4	4
Designation	1,25 t		•
	2,5	•	
	5	•	
	10	•	
	20	•	
	Rated load (designated R.L. below)		

Specifications Max values for class and rated load respectively

Continuous overload	%	25
Brief temporary overload (elicits no permanent damage)	%	60
Overload ultimate level	%	300
Mechanical deflection at R.L.	mm	~0,2
Lateral load relative to R.L. (can alter the output voltage $\pm 0,5\%$ of R.L.)	%	15
Calibration tolerance relative to Actual Load	\pm %	0,25
Sum of non-linearity, hysteresis and creep errors (30 min.) relative to R.L.	\pm %	0,15
Repeatability errors relative to R.L.	\pm %	0,05
Temperature effect on zero balance relative R.L.	\pm % / 10 °C	0,1
Temperature effect on output voltage relative to actual load *)	\pm % / 10 °C	0,1
Operating temperature	°C	70

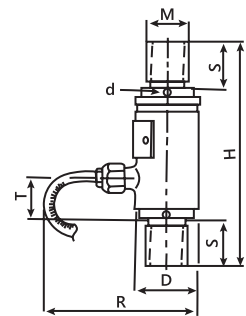
General specifications for all classes and load ratings

Output Voltage at R.L.: 1mV/V Zero unbalance (bias) $\pm 0,01$ mV/V.
 Recommended input voltage: 15 V Max. 21V
 Temperature effect is compensated within -10 to +50 °C
 Sealing: IEC IP67 (SENS55) Tested and approved by RISE (Research Institutes of Sweden)

*) Specifications are independent of resistances in the connecting wires for input voltage.

Dimensions and weight

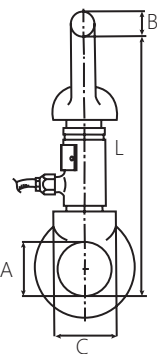
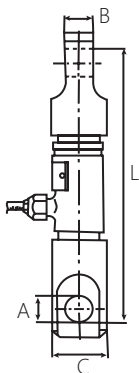
Type	Rated load (T)	Dimensions (mm)							Weight - kg
		D	H	d	M	S	R	T	
C	2,5	50	128	7	30x2	40	140	46	3,5
C	5	60	138	7	48x3	50	145	46	5
C	10	75	170	7	48x3	50	155	65	6,5
C	20	100	200	8	72x4	75	165	70	12
CD	1,25	50	128	7	30x3	40	140	46	3
D	2,5	50	128	7	36x4	40	140	46	4



Mounting accessories

Lifting eye type H

Lifting eye type LH



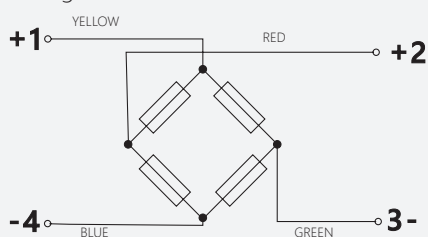
Eye type	Load cell		Dimensions (mm)				Weight kg
	Type	Rated load	A	B	C	L	
H-2	C	1,25	30	33	60	310	1
	C	2,5					
H-10	C	5	51	60	90	415	3
	C	10					
H-20	C	20	72	85	140	635	15
LH	CD	1,25	75	33	75	360	2,6
	D	2,5					

Lifting eye type H
 For load cell type C
 Designed for standard shackles SMS 1577

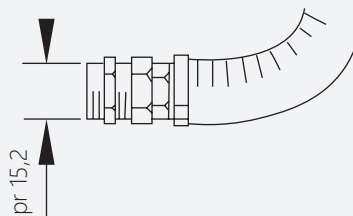
Lifting eye type LH
 For load cell type CD
 Std. eye SMS 15,
 DIN582

Connections

Markings



Cable with nipples



Terminal box A (optional)

